

# LogiLink®

## Sockets with safety shutter

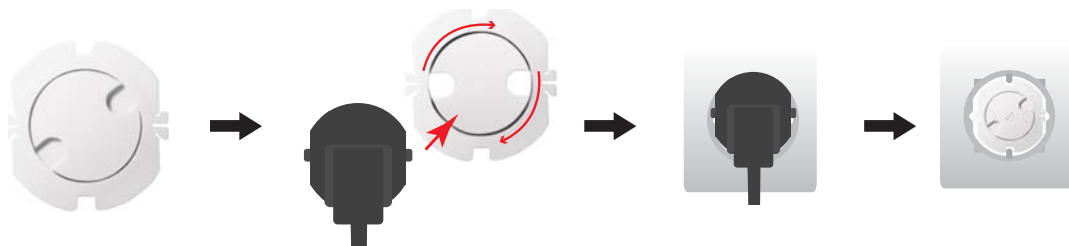
With Automatic Closure

Art. No.: EC3002

Sockets with safety shutter automatically closure all sockets in your home and prevent the fixing screw of the socket being removed. The socket protection catch will not release until the clockwise (right) turn is made using a power plug.

### Installation Guide:

1. Find an unused outlet
2. Place the connector pins on the safety shutter holes from the front, then turn the pins clockwise until the pins of the connectors are inserted. Then connect the plug firmly into socket closure as usual. When you pull the plug out again, the safety shutter closes automatically and your socket is immediately closed again.
3. Secure the socket protection automatically.



### Package Contents:

» 10 x Sockets

### Package Informations:

- » Packing Dimension: mm
- » Packing Weight: kg
- » Carton Dimension: 51.5 x 24 x 36.5mm
- » Carton Q'ty: 200pcs
- » Carton Weight: 10.1kg



EC3002



Made in China



RoHS  
compliant

\* The specifications and pictures are subject to change without notice.  
\*All trade names referenced are the registered namework of their respective owners.