

Angled safety plug McPower

extra flat, handle, strain relief

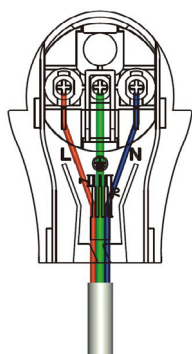
TECHNICAL DETAILS: · rewirable · 250 V~ / 16 A · max. 3680W · for cables of types H05VV-F 3x 1.0 mm² or 3x 1.5 mm² · extra flat
· with strain relief · color: black · handle

SAFETY INSTRUCTIONS: Keep the device's user manual. Regularly inspect the device for damage. Do not modify the product or its accessories. Do not insert any objects into the connection sockets. The product is not suitable for outdoor use. Do not short-circuit the connections. Only use the product when it is in perfect condition. Never operate a defective device! The device must not be altered in any way. Risk of electric shock and accident! Keep the device away from moisture and humidity. Avoid extreme conditions such as excessive heat or cold, moisture, microwaves, mechanical pressure, and vibrations. Avoid overloading the socket by not connecting multiple high-current devices simultaneously. Overloaded sockets can lead to overheating and fire hazards. Avoid improper mechanical stress on the socket. Always insert the angled plug into the socket with the cable pointing downward to reduce the torque exerted on the socket. Disconnect the power supply before connecting the device.

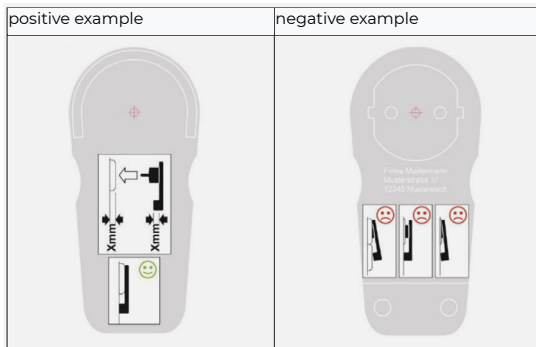
Electrical work, installation, and repairs should only be carried out by qualified electricians. An electric shock can be life-threatening! Clean the device only with a soft, dry cloth. Do not use scouring powder or chemical cleaning agents under any circumstances. Electrical components must not come into contact with moisture. Do not bend, crush, pinch, or otherwise damage the cables. If you have any questions, encounter defects, mechanical damage, or other problems, please contact the retailer or manufacturer. If you have doubts about the safety of the socket or the plug, or if they are not functioning properly, have them checked and repaired by a qualified electrician. This product is not a toy and should be kept out of children's hands! Please note that the product, as well as packaging, plastic films/bags, Styrofoam parts, etc., small parts, and insulation materials can become dangerous toys for children and pose a hazard.

ASSEMBLY

1. Switch off the fuse and check that there is no voltage. 2. Strip approx. 35 mm of cable. 3. Strip approx. 10 mm of insulation from the wire ends. 4. Loosen the four screws and remove the cover. 5. The earthing contact connection is labelled 'PE'. 6. Screw the wires into the screw terminals as shown in the connection drawing: green/yellow wire into 'PE'; brown/black wire into one of the silver socket contacts; blue wire into the other socket contact. Make sure that no wires are pinched incorrectly and that no strands protrude or stick out. 7. Lead the cable out of the plug at the point provided and screw the housing back on. Ensure that the strain relief slightly squeezes the cable sheath and that the strain relief is in place. Notes: The right-angle plug must be plugged in so that it is flush with the socket (see positive example) and not wedged, tilted or protruding (see negative example). Flat angled plugs with earthing contact must not be plugged into fixed socket outlets with a minimum projection of X ≥ 6 mm.



Connection



Full insertion

Part insertion



Minimum protrusion

DISPOSAL INSTRUCTIONS: By separating, recycling and disposing of old appliances in this way, you are making an important contribution to protecting our environment. Packaging can be disposed of free of charge in accordance with local regulations at the appropriate collection centres. According to the European WEEE Directive, electrical and electronic appliances may not be disposed of with household waste. Their components must be recycled or disposed of separately, as toxic and hazardous components can cause lasting damage to health and the environment if disposed of improperly. As a consumer, you are obliged under the German Electrical and Electronic Equipment Act (ElektroG) to return electrical and electronic equipment free of charge at the end of its life to the manufacturer, the point of sale or to public collection centres set up for this purpose. Details are regulated by the respective state law. The wheeled bin symbol on the product, operating instructions and/or packaging indicates these regulations.



DE: Eine mehrsprachige Version dieser Anleitung und die Konformitätserklärung finden Sie unter folgendem Link:

EN: A multilingual version of this manual and the Declaration of Conformity can be found at the following link:

FR: Vous trouverez une version multilingue de ce manuel et la déclaration de conformité sur le lien suivant:

ES: Encontrará una versión multilingüe de estas instrucciones y de la declaración de conformidad en el siguiente enlace:

<http://ettgroup.de/product/1300479>