

Item number: 1453164

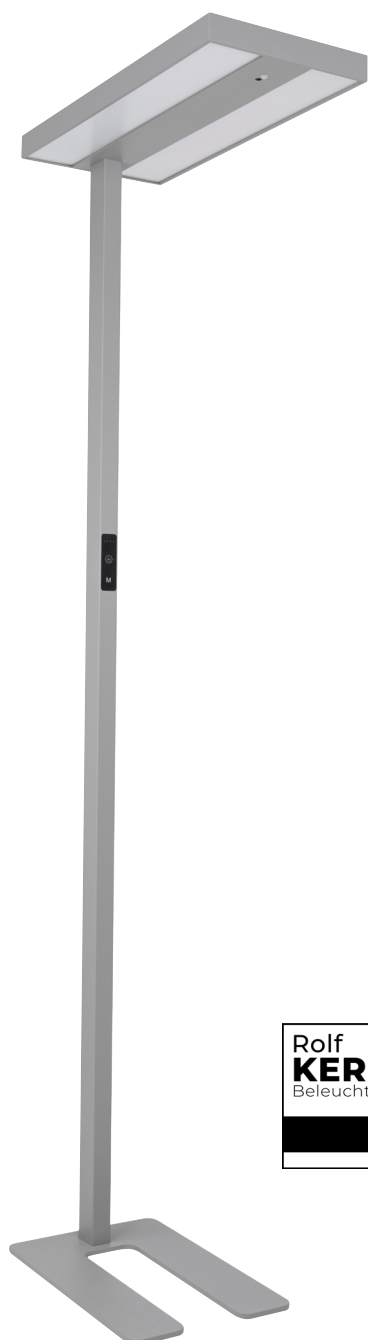
Instruction manual

LED standing desk lamp

ROLF KERN „Smart-Pro“

with touch display, PIR & daylight sensor

NE



TECHNICAL DETAILS

Operating voltage:	220 – 240 V
Light color:	neutral white
Color temperature:	4000 K
Absorbed power:	60 W
Power consumption in standby mode:	0,5 W
Lifetime:	36000 h
Illumination technology:	LED
Length:	610 mm
Width:	300 mm
High	1968 mm
Energy efficiency class:	This product contains a light source of Energy efficiency class E.
Dimmable:	yes - via touchdisplay
Unified Glare Rating:	<19

SAFETY INSTRUCTIONS

- Before commissioning, check the device for damage. If this is the case, please do not put the device into operation.
- Please note: If you make any technical modifications to the device, the guarantee of the device will expire immediately.
- Keep the operating instructions of the device.
- Please do not look directly into the light source in order to avoid injury to the eye.
- Do not drop the device. It could be damaged if it hits a hard surface.
- Avoid installing the unit in places with high temperature differences or high humidity.
- Repair and maintenance work on the appliance may only be carried out by trained specialist personnel!
- Do not carelessly leave the packaging material lying around, Plastic foils/ bags, polystyrene parts, etc., could become a dangerous toy for children.
- The device does not belong in children's hands, it is not a child's toy!

GENERAL NOTES

- Use only original parts supplied
- The product has no replaceable parts.
- Do not attempt to open or repair the product.

INTENDED USE

- The product is only suitable for indoor use.
- The product must only be used for its intended purpose, as per this user manual!
- Ensure that the lamp is only positioned vertically, with the base on the floor.

CARE INSTRUCTIONS

- Do not use damaged cables. New cables must have the same characteristics as the original.
- Do not connect to power when cleaning the lamp.
- Clean only with a soft cloth and neutral detergent. Avoid using alcohol or cleaning agents containing acetone, sulfur, beryllium, ammonia or other solvents.
- Avoid mechanical pressure and heavy contamination.
- The replacement of the lamp can only be provided by the manufacturer.

DISPOSAL INSTRUCTIONS

By separating materials, recycling and disposing of old equipment in this way, you are making an important contribution to protecting our environment. Packaging can be returned to appropriate collection points for free.

WEEE disposal note

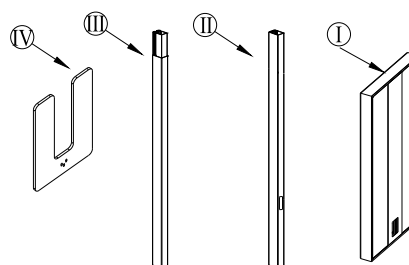
According to the European WEEE Directive, electrical and electronic WEEE Directive, electrical and electronic equipment must not be disposed of with household waste. Their components must be recycled or disposed of separately, because toxic and hazardous components can cause lasting damage to health and the environment if disposed of improperly.




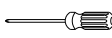
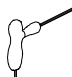
As a consumer, you are obliged under the Electrical and Electronic Equipment Act (ElektroG) to return electrical and electronic equipment free of charge at the end of its service life to the manufacturer, the point of sale or to public collection points set up for this purpose.

Details are regulated by the respective state law.

The symbol of the wheeled garbage can on the product, the operating instructions and/or the packaging refers to these regulations.

SCOPE OF DELIVERY



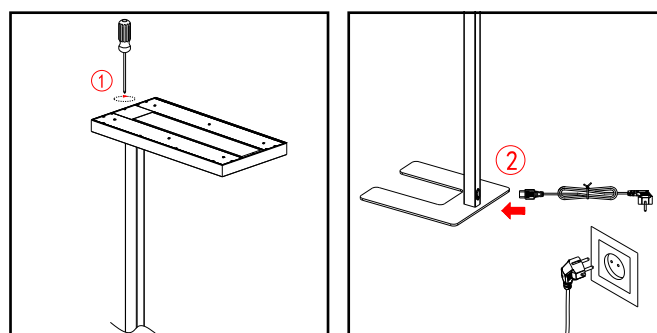
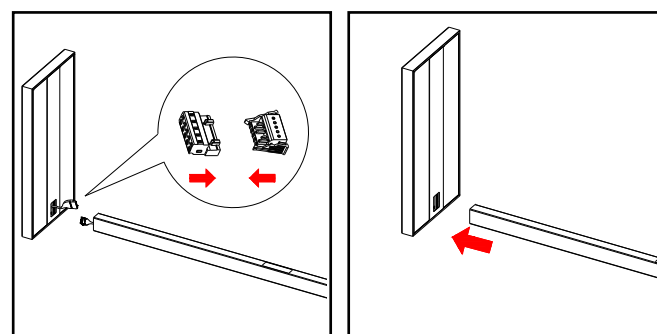
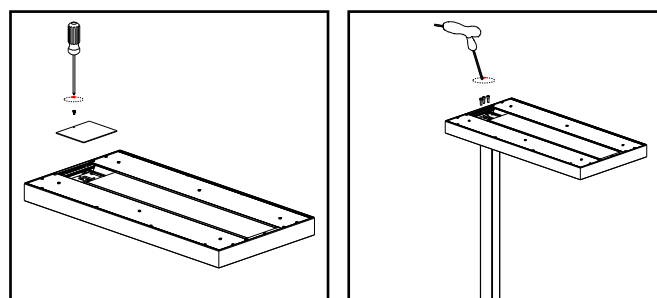
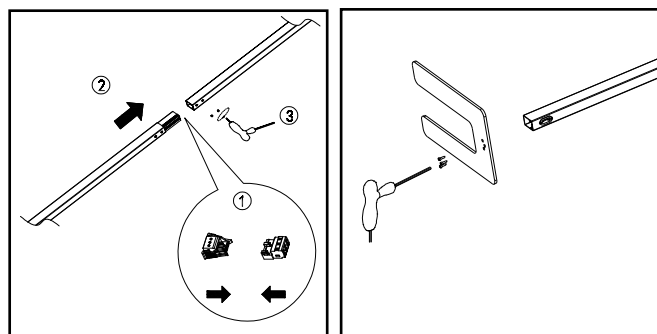
Screw A		AX3
Screw B		BX3
Screw C		CX2
Cross point screwdriver		X1
Hexagon screwdriver		X1

Item number: 1453164

ASSEMBLY

Note: Assembly instructions can be found on the last page.

- Check if all parts in the delivery are included.
- Connect the connectors of Part 2 and 3 to each other.
- Insert Part 2 and 3 into the guide rail. Secure the parts with the C-screws.
- Use the A-screws to connect the base of the lamp (Part 4) to Part 3.
- Open the small flap on the top of the lampshade (Part 1) to later place the screws underneath.
- Connect the connectors of Part 1 and 2.
- Then, insert the base into the designated slot on the bottom of the lampshade.
- Now, at the location where you opened the flap, secure the connection between the lampshade and base with four B-screws.
- Close the flap, upright the lamp, and connect the power plug to the lamp and the socket.
- Finally, test the functionality.



SETTINGS

The lamp has four different modes:

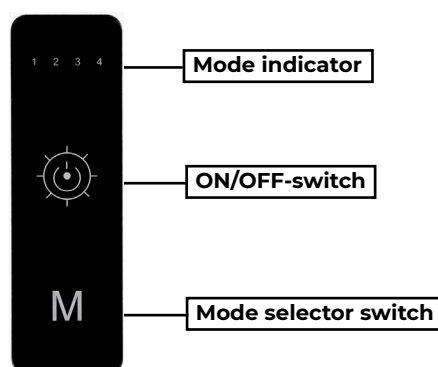
Mode 1: Brightness adjusts automatically, no sensor intervenes.

Mode 2: You set a specific brightness. The motion sensor turns on the light as soon as motion is detected. After 15 minutes without movement, the light dims to 10%. Another 15 minutes later, the lamp turns off. If motion is detected again, the light goes back to 100%.

Mode 3: You first set a brightness level. The light sensor ensures a consistent brightness by dimming the light based on the surrounding environment.

Mode 4: Combines Mode 2 and 3.

- You can turn the lamp on and off using the ON/OFF switch.
- Using the touch panel labeled M, you can set the mode.
- The active mode is indicated by a blue light in the upper row.
- You can also individually dim the lamp in any mode using the ON/OFF switch.
- Simply press and hold the touch panel, and the lamp will dim up or down from the set brightness level.
- Repeat the process until the brightness matches your desired level.





- DE:** Eine mehrsprachige Version dieser Anleitung und die Konformitätserklärung finden Sie unter folgendem Link:
- EN:** A multilingual version of this manual and the Declaration of Conformity can be found at the following link:
- FR:** Vous trouverez une version multilingue de ce manuel et la déclaration de conformité sur le lien suivant:
- ES:** Encontrará una versión multilingüe de estas instrucciones y de la declaración de conformidad en el siguiente enlace:

<http://ettgroup.de/product/1453164>

