

Item number: 1453563

Instruction manual

LED recessed light McShine „EL-315“

IP65, 4,9 W, 450 lm, 3000 K,
warm white, Ø88x27,5 mm



TECHNICAL DETAILS

Operating voltage:	230 V
Light color:	warm white
Color temperature:	3000 K
Absorbed power:	4,9 W
Lifetime:	25000 h
Illumination technology:	LED
Outer diameter:	88 mm
height:	27,5 mm
Energy efficiency class:	This product contains a light source of Energy efficiency class F.
Dimmable:	no
Correlated Color Temperature:	no
Protection class:	IP65

Item number: 1453563

EN

DISPOSAL INSTRUCTIONS

By separating materials, recycling and disposing of old equipment in this way, you are making an important contribution to protecting our environment.

Packaging can be returned to appropriate collection points for free.

WEEE disposal note

According to the European WEEE Directive, electrical and electronic WEEE Directive, electrical and electronic equipment must not be disposed of with household waste. Their components must be recycled or disposed of separately, because toxic and hazardous components can cause lasting damage to health and the environment if disposed of improperly.

As a consumer, you are obliged under the Electrical and Electronic Equipment Act (ElektroG) to return electrical and electronic equipment free of charge at the end of its service life to the manufacturer, the point of sale or to public collection points set up for this purpose.

Details are regulated by the respective state law.

The symbol of the wheeled garbage can on the product, the operating instructions and/or the packaging refers to these regulations.

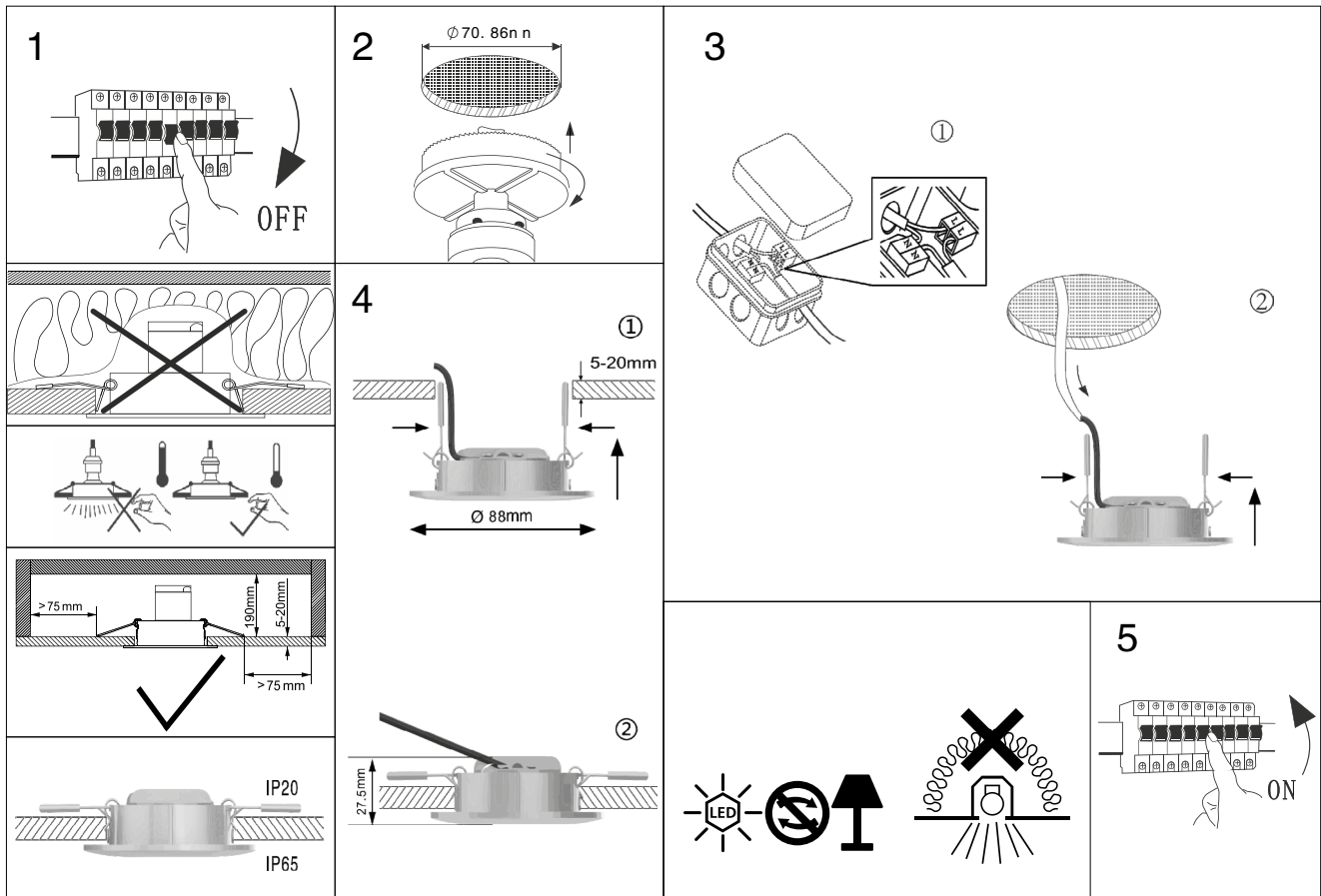
SAFETY INSTRUCTIONS

- Before commissioning, check the device for damage. If this is the case, please do not put the device into operation.
- Please note that the approval of the device expires immediately if technical modifications are made to the device!
- Keep the operating instructions of the device
- When working on 230 V, please observe strict compliance with the accident prevention regulations.
- Do not short-circuit the connections and the circuits.
- Installation may only be carried out by qualified personnel. Due to the heat generated by the light, do not cover the spotlight or touch the housing during operation.
- Please do not look directly into the light source to avoid eye injury.
- Do not drop the device. It could be damaged if it hits a hard surface.
- Avoid installation in places with strong temperature differences.
- Do not leave the packaging material carelessly, plastic foils/ bags, polystyrene parts, etc., could become a dangerous toy for children.
- The device does not belong in children's hands, it is not a children's toy!

ASSEMBLY INSTRUCTIONS

- A terminal block should be used to connect the power cable.
- The terminal block must comply with IEC/EN 60998-1, IEC/EN 60998-2-1 or IEC/EN 60998-2-2 and comply with protection class II:
 - The terminal strip is 2-pole
 - The capacity of the terminal strip is 0.5-1.5 mm²
 - The rated voltage of the terminal strip must not be less than 250 V
- The wire end must be clamped with a crimp terminal to prevent the free wire conductor from coming out.
- Terminals with double insulation and cable anchorage do not need to be fixed.
- Please connect the power cord of the products to the power cord by following the rule:
 - L to L,
 - N to N,
 - green-yellow is to be insulated.

Item number: 1453568



DE: Eine mehrsprachige Version dieser Anleitung und die Konformitätserklärung finden Sie unter folgendem Link:

EN: A multilingual version of this manual and the Declaration of Conformity can be found at the following link:

FR: Vous trouverez une version multilingue de ce manuel et la déclaration de conformité sur le lien suivant:

ES: Encontrará una versión multilingüe de estas instrucciones y de la declaración de conformidad en el siguiente enlace:

<http://ettgroup.de/product/1453563>

Made by ETT Distribution GmbH, Schmalbachstraße 16, 38112 Braunschweig
www.ett-online.de | Tel. +49 531 58 11 00 | service@ett-online.de
Reprinting or reproduction only with expressed permission.