

Toggle switch McPower „FLAIR“

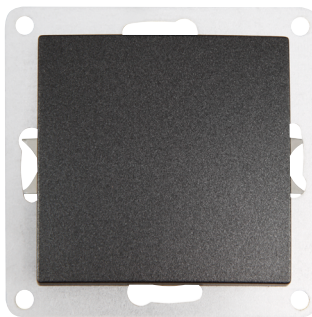
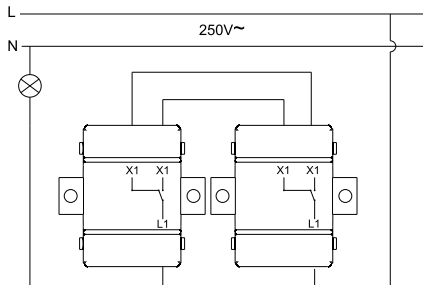
250V~/10A, flush-mounted, anthracite

TECHNICAL DETAILS: · Flush-mounted toggle switch with flat rocker · 250V~/10A · without frame · WxHxD: 80x80x40mm · suitable for hollow wall boxes with 68mm Ø

SAFETY INSTRUCTIONS: Keep the operating instructions for the appliance in a safe place. Check the appliance regularly for damage. Do not modify the product or accessories. Do not insert any objects into connection sockets. The product is not suitable for outdoor use. Do not short-circuit the connections. Only use the product if it is in perfect condition. Never operate a defective device! The appliance must not be modified in any way. Risk of electric shock and accident! Keep the appliance away from moisture and humidity. Avoid extreme loads such as extreme heat or cold, moisture, microwaves, mechanical pressure and vibrations. Avoid overloading the socket: Do not connect several high-current devices at the same time. Overloaded sockets can lead to overheating and a fire hazard. **Disconnect the mains power supply before connecting. Electrical work, installation and repairs may only be carried out by qualified electricians. Avoid inserting metal objects or fingers into the socket to prevent a short circuit or electric shock - DANGER TO LIFE!** Only wipe the appliance with a soft, dry cloth. Never use scouring powder or chemical cleaning agents. Electrical components must not come into contact with moisture. Do not kink, crush, pinch or otherwise damage the cables. If you have any questions, defects, mechanical damage or other problems, please contact the dealer or manufacturer. If you have any doubts about the safety of the socket or if it is not working properly, have it checked by a qualified electrician and repaired if necessary. The product is not a toy and does not belong in the hands of children! Please note that the product, packaging, plastic film / bags, polystyrene parts, etc. are not suitable for children. Small parts and insulating material can become a dangerous toy for children and pose a hazard.

ASSEMBLY

1. Switch off the fuse and check that there is no voltage. **2.** Strip approx. 10 mm of insulation from the wire ends. **3.** Remove the cover. **4.** The connections are labeled „L1“ and „X1“. **5.** Plug the wires into the plug-in connections as described in the sketch below. Ensure no wires are improperly clamped and that no strands are protruding or overlapping. **6.** Insert the switch into the flush-mounted box and tighten the mounting claws. **7.** Place the frame over the installed light switch and snap the switch rocker onto the switch.



DISPOSAL INSTRUCTIONS: By separating, recycling and disposing of old appliances in this way, you are making an important contribution to protecting our environment. Packaging can be disposed of free of charge in accordance with local regulations at the appropriate collection centres. According to the European WEEE Directive, electrical and electronic appliances may not be disposed of with household waste. Their components must be recycled or disposed of separately, as toxic and hazardous components can cause lasting damage to health and the environment if disposed of improperly. As a consumer, you are obliged under the German Electrical and Electronic Equipment Act (ElektroG) to return electrical and electronic equipment free of charge at the end of its life to the manufacturer, the point of sale or to public collection centres set up for this purpose. Details are regulated by the respective state law. The wheeled bin symbol on the product, operating instructions and/or packaging indicates these regulations.



DE: Eine mehrsprachige Version dieser Anleitung und die Konformitätserklärung finden Sie unter folgendem Link:

EN: A multilingual version of this manual and the Declaration of Conformity can be found at the following link:

FR: Vous trouverez une version multilingue de ce manuel et la déclaration de conformité sur le lien suivant:

ES: Encontrará una versión multilingüe de estas instrucciones y de la declaración de conformidad en el siguiente enlace:

<http://ettgroup.de/product/1534755>

Push button McPower McPower „FLAIR“

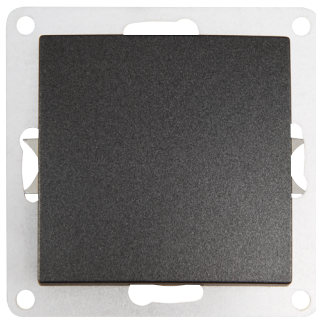
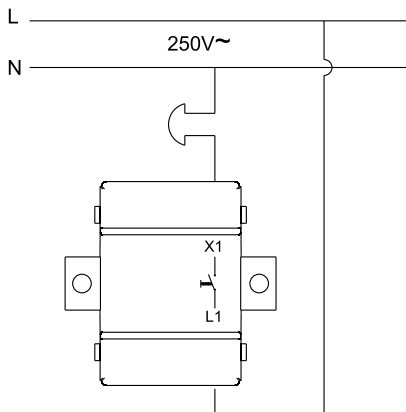
250V~/10A, flush-mounted, anthracite

TECHNICAL DETAILS: · Flush-mounted rocker switch, e.g., for use as a doorbell button · 250V~/10A · without frame · WxHxD: 80x80x40mm · matching cover with doorbell symbol · suitable for hollow wall boxes with 68mm Ø

SAFETY INSTRUCTIONS: Keep the operating instructions for the appliance in a safe place. Check the appliance regularly for damage. Do not modify the product or accessories. Do not insert any objects into connection sockets. The product is not suitable for outdoor use. Do not short-circuit the connections. Only use the product if it is in perfect condition. Never operate a defective device! The appliance must not be modified in any way. Risk of electric shock and accident! Keep the appliance away from moisture and humidity. Avoid extreme loads such as extreme heat or cold, moisture, microwaves, mechanical pressure and vibrations. Avoid overloading the socket; Do not connect several high-current devices at the same time. Overloaded sockets can lead to overheating and a fire hazard. **Disconnect the mains power supply before connecting. Electrical work, installation and repairs may only be carried out by qualified electricians. Avoid inserting metal objects or fingers into the socket to prevent a short circuit or electric shock - DANGER TO LIFE!** Only wipe the appliance with a soft, dry cloth. Never use scouring powder or chemical cleaning agents. Electrical components must not come into contact with moisture. Do not kink, crush, pinch or otherwise damage the cables. If you have any questions, defects, mechanical damage or other problems, please contact the dealer or manufacturer. If you have any doubts about the safety of the socket or if it is not working properly, have it checked by a qualified electrician and repaired if necessary. The product is not a toy and does not belong in the hands of children! Please note that the product, packaging, plastic film / bags, polystyrene parts, etc. are not suitable for children. Small parts and insulating material can become a dangerous toy for children and pose a hazard.

ASSEMBLY

1. Switch off the fuse and check that there is no voltage. **2.** Strip approx. 10 mm of insulation from the wire ends. **3.** Remove the cover. **4.** The connections are labeled „L1“ and „X1“. **5.** Screw the wires into the screw terminals as described in the sketch below. Ensure no wires are improperly clamped and that no strands are protruding or overlapping. **6.** Insert the switch into the flush-mounted box and tighten the mounting claws. **7.** Place the frame over the installed push button and snap the button rocker onto the push button.



DISPOSAL INSTRUCTIONS: By separating, recycling and disposing of old appliances in this way, you are making an important contribution to protecting our environment. Packaging can be disposed of free of charge in accordance with local regulations at the appropriate collection centres. According to the European WEEE Directive, electrical and electronic appliances may not be disposed of with household waste. Their components must be recycled or disposed of separately, as toxic and hazardous components can cause lasting damage to health and the environment if disposed of improperly. As a consumer, you are obliged under the German Electrical and Electronic Equipment Act (ElektroG) to return electrical and electronic equipment free of charge at the end of its life to the manufacturer, the point of sale or to public collection centres set up for this purpose. Details are regulated by the respective state law. The wheeled bin symbol on the product, operating instructions and/or packaging indicates these regulations.



DE: Eine mehrsprachige Version dieser Anleitung und die Konformitätserklärung finden Sie unter folgendem Link:

EN: A multilingual version of this manual and the Declaration of Conformity can be found at the following link:

FR: Vous trouverez une version multilingue de ce manuel et la déclaration de conformité sur le lien suivant:

ES: Encontrará una versión multilingüe de estas instrucciones y de la declaración de conformidad en el siguiente enlace:

<http://ettgroup.de/product/1534756>

Series switch McPower „FLAIR“

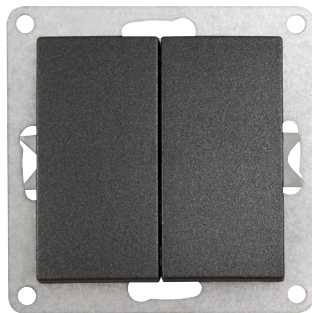
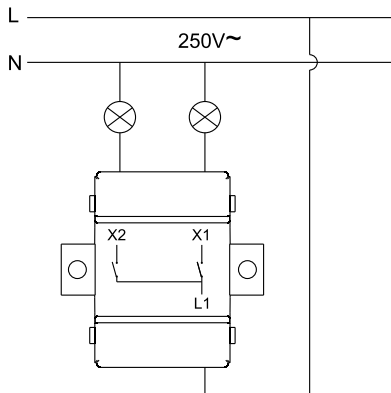
double, 250V~/10A, flush-mounted, anthracite

TECHNICAL DETAILS: · Flush-mounted series double switch · 250V~/10A · without frame · WxHxD: 80x80x40mm · suitable for hollow wall boxes with 68mm Ø

SAFETY INSTRUCTIONS: Keep the operating instructions for the appliance in a safe place. Check the appliance regularly for damage. Do not modify the product or accessories. Do not insert any objects into connection sockets. The product is not suitable for outdoor use. Do not short-circuit the connections. Only use the product if it is in perfect condition. Never operate a defective device! The appliance must not be modified in any way. Risk of electric shock and accident! Keep the appliance away from moisture and humidity. Avoid extreme loads such as extreme heat or cold, moisture, microwaves, mechanical pressure and vibrations. Avoid overloading the socket; Do not connect several high-current devices at the same time. Overloaded sockets can lead to overheating and a fire hazard. **Disconnect the mains power supply before connecting. Electrical work, installation and repairs may only be carried out by qualified electricians. Avoid inserting metal objects or fingers into the socket to prevent a short circuit or electric shock - DANGER TO LIFE!** Only wipe the appliance with a soft, dry cloth. Never use scouring powder or chemical cleaning agents. Electrical components must not come into contact with moisture. Do not kink, crush, pinch or otherwise damage the cables. If you have any questions, defects, mechanical damage or other problems, please contact the dealer or manufacturer. If you have any doubts about the safety of the socket or if it is not working properly, have it checked by a qualified electrician and repaired if necessary. The product is not a toy and does not belong in the hands of children! Please note that the product, packaging, plastic film / bags, polystyrene parts, etc. are not suitable for children. Small parts and insulating material can become a dangerous toy for children and pose a hazard.

ASSEMBLY

1. Switch off the fuse and check that there is no voltage. **2.** Strip approx. 10 mm of insulation from the wire ends. **3.** Remove the cover. **4.** The connections are labeled „L1“ and „X1“. **5.** Screw the wires into the screw terminals as described in the sketch below. Ensure no wires are improperly clamped and that no strands are protruding or overlapping. **6.** Insert the switch into the flush-mounted box and tighten the mounting claws. **7.** Place the frame over the installed light switch and snap the switch rockers onto the switch.



DISPOSAL INSTRUCTIONS: By separating, recycling and disposing of old appliances in this way, you are making an important contribution to protecting our environment. Packaging can be disposed of free of charge in accordance with local regulations at the appropriate collection centres. According to the European WEEE Directive, electrical and electronic appliances may not be disposed of with household waste. Their components must be recycled or disposed of separately, as toxic and hazardous components can cause lasting damage to health and the environment if disposed of improperly. As a consumer, you are obliged under the German Electrical and Electronic Equipment Act (ElektroG) to return electrical and electronic equipment free of charge at the end of its life to the manufacturer, the point of sale or to public collection centres set up for this purpose. Details are regulated by the respective state law. The wheeled bin symbol on the product, operating instructions and/or packaging indicates these regulations.



DE: Eine mehrsprachige Version dieser Anleitung und die Konformitätserklärung finden Sie unter folgendem Link:

EN: A multilingual version of this manual and the Declaration of Conformity can be found at the following link:

FR: Vous trouverez une version multilingue de ce manuel et la déclaration de conformité sur le lien suivant:

ES: Encontrará una versión multilingüe de estas instrucciones y de la declaración de conformidad en el siguiente enlace:

<http://ettgroup.de/product/1534758>

Socket outlet with earthing contact McPower „FLAIR“

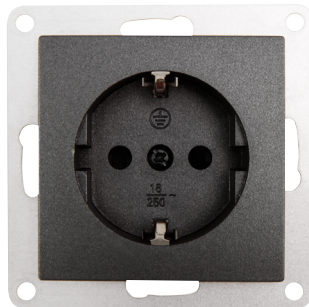
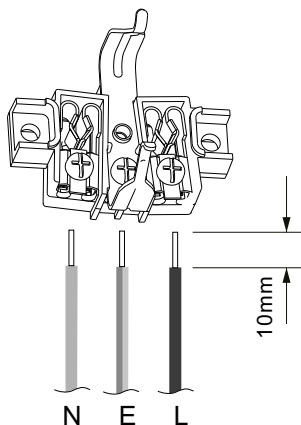
250V~/16A, UP, Plug-in protection, anthracite

TECHNICAL DETAILS: Flush-mounted socket outlet with earthing contact · 250 V~/16 A/50 Hz · with plug-in protection/shutter
· without frame · WxHxD: 80x80x40mm · suitable for cavity wall sockets with 68mm-Ø

SAFETY INSTRUCTIONS: Keep the operating instructions for the appliance in a safe place. Check the appliance regularly for damage. Do not modify the product or accessories. Do not insert any objects into connection sockets. The product is not suitable for outdoor use. Do not short-circuit the connections. Only use the product if it is in perfect condition. Never operate a defective device! The appliance must not be modified in any way. Risk of electric shock and accident! Keep the appliance away from moisture and humidity. Avoid extreme loads such as extreme heat or cold, moisture, microwaves, mechanical pressure and vibrations. Avoid overloading the socket: Do not connect several high-current devices at the same time. Overloaded sockets can lead to overheating and a fire hazard. **Disconnect the mains power supply before connecting. Electrical work, installation and repairs may only be carried out by qualified electricians. Avoid inserting metal objects or fingers into the socket to prevent a short circuit or electric shock - DANGER TO LIFE!** Only wipe the appliance with a soft, dry cloth. Never use scouring powder or chemical cleaning agents. Electrical components must not come into contact with moisture. Do not kink, crush, pinch or otherwise damage the cables. If you have any questions, defects, mechanical damage or other problems, please contact the dealer or manufacturer. If you have any doubts about the safety of the socket or if it is not working properly, have it checked by a qualified electrician and repaired if necessary. The product is not a toy and does not belong in the hands of children! Please note that the product, packaging, plastic film / bags, polystyrene parts, etc. are not suitable for children. Small parts and insulating material can become a dangerous toy for children and pose a hazard.

ASSEMBLY

1. Switch off the fuse and check that there is no voltage. **2.** Strip approx. 10 mm of insulation from the wire ends. **3.** Remove the cover. **4.** the connections are labelled „L“, „N“ and „ \perp “. **5.** Screw the wires into the screw connections as follows: brown/black wire in „L“; blue wire in „N“; green/yellow wire in „ \perp “. Make sure that no wires are pinched incorrectly and that no strands protrude or stick out. **6.** Insert the socket outlet into the flush-mounted box and screw the fixing claws tight. **7.** Insert the socket cover into the frame and screw the socket cover hand-tight into the flush-mounted box using the screw in the centre.



DISPOSAL INSTRUCTIONS: By separating, recycling and disposing of old appliances in this way, you are making an important contribution to protecting our environment. Packaging can be disposed of free of charge in accordance with local regulations at the appropriate collection centres. According to the European WEEE Directive, electrical and electronic appliances may not be disposed of with household waste. Their components must be recycled or disposed of separately, as toxic and hazardous components can cause lasting damage to health and the environment if disposed of improperly. As a consumer, you are obliged under the German Electrical and Electronic Equipment Act (ElektroG) to return electrical and electronic equipment free of charge at the end of its life to the manufacturer, the point of sale or to public collection centres set up for this purpose. Details are regulated by the respective state law. The wheeled bin symbol on the product, operating instructions and/or packaging indicates these regulations.



DE: Eine mehrsprachige Version dieser Anleitung und die Konformitätserklärung finden Sie unter folgendem Link:

EN: A multilingual version of this manual and the Declaration of Conformity can be found at the following link:

FR: Vous trouverez une version multilingue de ce manuel et la déclaration de conformité sur le lien suivant:

ES: Encontrará una versión multilingüe de estas instrucciones y de la declaración de conformidad en el siguiente enlace:

<http://ettgroup.de/product/1534759>

Antenna socket McPower „FLAIR“

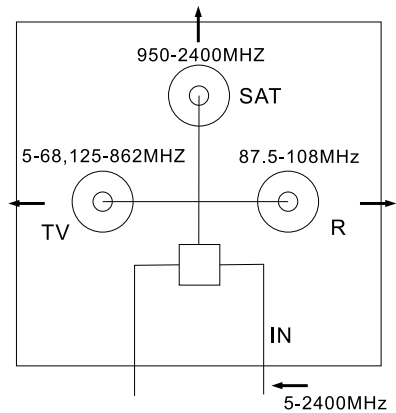
for TV, radio and satellite, UP, anthracite

TECHNICAL DETAILS: Flush-mounted antenna socket · without frame · end socket · WxHxD: 80x80x40mm · suitable for hollow wall boxes with 68mm Ø

SAFETY INSTRUCTIONS: Keep the operating instructions for the appliance in a safe place. Check the appliance regularly for damage. Do not modify the product or accessories. Do not insert any objects into connection sockets. The product is not suitable for outdoor use. Do not short-circuit the connections. Only use the product if it is in perfect condition. Never operate a defective device! The appliance must not be modified in any way. Risk of electric shock and accident! Keep the appliance away from moisture and humidity. Avoid extreme loads such as extreme heat or cold, moisture, microwaves, mechanical pressure and vibrations. Avoid overloading the socket : Do not connect several high-current devices at the same time. Overloaded sockets can lead to overheating and a fire hazard. **Disconnect the mains power supply before connecting. Electrical work, installation and repairs may only be carried out by qualified electricians. Avoid inserting metal objects or fingers into the socket to prevent a short circuit or electric shock - DANGER TO LIFE!** Only wipe the appliance with a soft, dry cloth. Never use scouring powder or chemical cleaning agents. Electrical components must not come into contact with moisture. Do not kink, crush, pinch or otherwise damage the cables. If you have any questions, defects, mechanical damage or other problems, please contact the dealer or manufacturer. If you have any doubts about the safety of the socket or if it is not working properly, have it checked by a qualified electrician and repaired if necessary. The product is not a toy and does not belong in the hands of children! Please note that the product, packaging, plastic film / bags, polystyrene parts, etc. are not suitable for children. Small parts and insulating material can become a dangerous toy for children and pose a hazard.

ASSEMBLY

1. Turn off the circuit breaker and check for no voltage. **2.** Remove the cover by loosening the screw in the middle. **3.** Loosen the strain relief. **4.** Remove about 2 cm of the outer insulation of the coaxial cable with a round knife. **5.** Fold the braided shield back carefully. **6.** Remove about 1 cm of the inner insulation to expose the inner conductor. **7.** Insert the coaxial conductors into the appropriate connection terminals. Observe the incoming and outgoing lines. **8.** Tighten the strain relief so that the cable is lightly compressed. **9.** Insert the antenna socket into the flush-mounted box and tighten the mounting claws. **10.** Insert the cover into the frame and screw the cover hand-tight into the flush-mounted box through the screw in the middle.



DISPOSAL INSTRUCTIONS: By separating, recycling and disposing of old appliances in this way, you are making an important contribution to protecting our environment. Packaging can be disposed of free of charge in accordance with local regulations at the appropriate collection centres. According to the European WEEE Directive, electrical and electronic appliances may not be disposed of with household waste. Their components must be recycled or disposed of separately, as toxic and hazardous components can cause lasting damage to health and the environment if disposed of improperly. As a consumer, you are obliged under the German Electrical and Electronic Equipment Act (ElektroG) to return electrical and electronic equipment free of charge at the end of its life to the manufacturer, the point of sale or to public collection centres set up for this purpose. Details are regulated by the respective state law. The wheeled bin symbol on the product, operating instructions and/or packaging indicates these regulations.



DE: Eine mehrsprachige Version dieser Anleitung und die Konformitätserklärung finden Sie unter folgendem Link:

EN: A multilingual version of this manual and the Declaration of Conformity can be found at the following link:

FR: Vous trouverez une version multilingue de ce manuel et la déclaration de conformité sur le lien suivant:

ES: Encontrará una versión multilingüe de estas instrucciones y de la declaración de conformidad en el siguiente enlace:

<http://ettgroup.de/product/1534760>

Frame McPower „FLAIR“

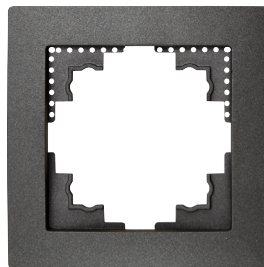
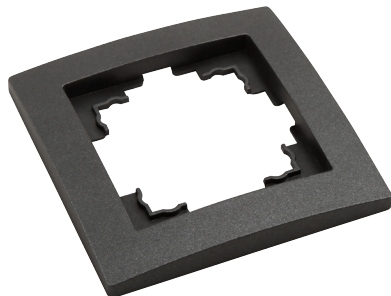
single, anthracite

TECHNICAL DETAILS: · Single frame · Dimensions (WxHxD): 80x80x8mm

SAFETY INSTRUCTIONS: Keep the operating instructions for the appliance in a safe place. Check the appliance regularly for damage. Do not modify the product or accessories. Do not insert any objects into connection sockets. The product is not suitable for outdoor use. Do not short-circuit the connections. Only use the product if it is in perfect condition. Never operate a defective device! The appliance must not be modified in any way. Risk of electric shock and accident! Keep the appliance away from moisture and humidity. Avoid extreme loads such as extreme heat or cold, moisture, microwaves, mechanical pressure and vibrations. Avoid overloading the socket: Do not connect several high-current devices at the same time. Overloaded sockets can lead to overheating and a fire hazard. **Disconnect the mains power supply before connecting. Electrical work, installation and repairs may only be carried out by qualified electricians. Avoid inserting metal objects or fingers into the socket to prevent a short circuit or electric shock - DANGER TO LIFE!** Only wipe the appliance with a soft, dry cloth. Never use scouring powder or chemical cleaning agents. Electrical components must not come into contact with moisture. Do not kink, crush, pinch or otherwise damage the cables. If you have any questions, defects, mechanical damage or other problems, please contact the dealer or manufacturer. If you have any doubts about the safety of the socket or if it is not working properly, have it checked by a qualified electrician and repaired if necessary. The product is not a toy and does not belong in the hands of children! Please note that the product, packaging, plastic film / bags, polystyrene parts, etc. are not suitable for children. Small parts and insulating material can become a dangerous toy for children and pose a hazard.

ASSEMBLY

1. Turn off the circuit breaker and check for the absence of voltage. **2.** Install the desired switch or socket properly according to its installation manual. **3.** Insert the socket cover into the frame and hand-tighten the socket cover into the flush-mounted box using the screw in the center, or hold the frame in the desired position and insert the switch rockers into the corresponding switch.



Note: When using the frame with USB sockets, either one corner or both corners of the plastic must be carefully cut out. The plastic does not have any markings or perforations for cutting out to ensure stability for the other applications.

DISPOSAL INSTRUCTIONS: By separating, recycling and disposing of old appliances in this way, you are making an important contribution to protecting our environment. Packaging can be disposed of free of charge in accordance with local regulations at the appropriate collection centres. According to the European WEEE Directive, electrical and electronic appliances may not be disposed of with household waste. Their components must be recycled or disposed of separately, as toxic and hazardous components can cause lasting damage to health and the environment if disposed of improperly. As a consumer, you are obliged under the German Electrical and Electronic Equipment Act (ElektroG) to return electrical and electronic equipment free of charge at the end of its life to the manufacturer, the point of sale or to public collection centres set up for this purpose. Details are regulated by the respective state law. The wheeled bin symbol on the product, operating instructions and/or packaging indicates these regulations.



DE: Eine mehrsprachige Version dieser Anleitung und die Konformitätserklärung finden Sie unter folgendem Link:

EN: A multilingual version of this manual and the Declaration of Conformity can be found at the following link:

FR: Vous trouverez une version multilingue de ce manuel et la déclaration de conformité sur le lien suivant:

ES: Encontrará una versión multilingüe de estas instrucciones y de la declaración de conformidad en el siguiente enlace:

<http://ettgroup.de/product/1534762>

Frame McPower „FLAIR“

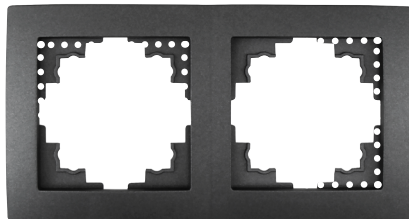
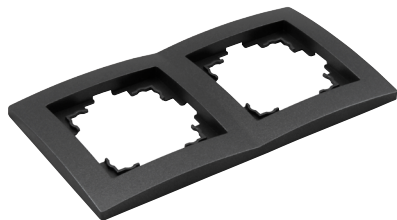
double, anthracite

TECHNICAL DETAILS: · Double frame · Dimensions (WxHxD): 150x80x8mm

SAFETY INSTRUCTIONS: Keep the operating instructions for the appliance in a safe place. Check the appliance regularly for damage. Do not modify the product or accessories. Do not insert any objects into connection sockets. The product is not suitable for outdoor use. Do not short-circuit the connections. Only use the product if it is in perfect condition. Never operate a defective device! The appliance must not be modified in any way. Risk of electric shock and accident! Keep the appliance away from moisture and humidity. Avoid extreme loads such as extreme heat or cold, moisture, microwaves, mechanical pressure and vibrations. Avoid overloading the socket: Do not connect several high-current devices at the same time. Overloaded sockets can lead to overheating and a fire hazard. **Disconnect the mains power supply before connecting. Electrical work, installation and repairs may only be carried out by qualified electricians. Avoid inserting metal objects or fingers into the socket to prevent a short circuit or electric shock - DANGER TO LIFE!** Only wipe the appliance with a soft, dry cloth. Never use scouring powder or chemical cleaning agents. Electrical components must not come into contact with moisture. Do not kink, crush, pinch or otherwise damage the cables. If you have any questions, defects, mechanical damage or other problems, please contact the dealer or manufacturer. If you have any doubts about the safety of the socket or if it is not working properly, have it checked by a qualified electrician and repaired if necessary. The product is not a toy and does not belong in the hands of children! Please note that the product, packaging, plastic film / bags, polystyrene parts, etc. are not suitable for children. Small parts and insulating material can become a dangerous toy for children and pose a hazard.

ASSEMBLY

1. Turn off the circuit breaker and check for the absence of voltage. **2.** Install the desired switch or socket properly according to its installation manual. **3.** Insert the socket cover into the frame and hand-tighten the socket cover into the flush-mounted box using the screw in the center, or hold the frame in the desired position and insert the switch rockers into the corresponding switch.



Note: When using the frame with USB sockets, either one corner or both corners of the plastic must be carefully cut out. The plastic does not have any markings or perforations for cutting out to ensure stability for the other applications.

DISPOSAL INSTRUCTIONS: By separating, recycling and disposing of old appliances in this way, you are making an important contribution to protecting our environment. Packaging can be disposed of free of charge in accordance with local regulations at the appropriate collection centres. According to the European WEEE Directive, electrical and electronic appliances may not be disposed of with household waste. Their components must be recycled or disposed of separately, as toxic and hazardous components can cause lasting damage to health and the environment if disposed of improperly. As a consumer, you are obliged under the German Electrical and Electronic Equipment Act (ElektroG) to return electrical and electronic equipment free of charge at the end of its life to the manufacturer, the point of sale or to public collection centres set up for this purpose. Details are regulated by the respective state law. The wheeled bin symbol on the product, operating instructions and/or packaging indicates these regulations.



DE: Eine mehrsprachige Version dieser Anleitung und die Konformitätserklärung finden Sie unter folgendem Link:

EN: A multilingual version of this manual and the Declaration of Conformity can be found at the following link:

FR: Vous trouverez une version multilingue de ce manuel et la déclaration de conformité sur le lien suivant:

ES: Encontrará una versión multilingüe de estas instrucciones y de la declaración de conformidad en el siguiente enlace:

<http://ettgroup.de/product/1534763>

Frame McPower „FLAIR“

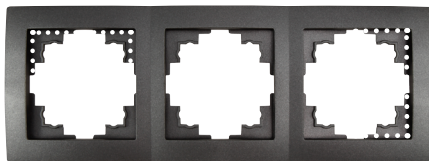
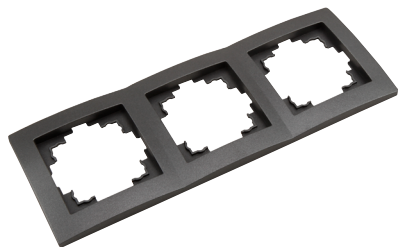
triple, anthracite

TECHNICAL DETAILS: · Triple frame · Dimensions (WxHxD): 220x80x8mm

SAFETY INSTRUCTIONS: Keep the operating instructions for the appliance in a safe place. Check the appliance regularly for damage. Do not modify the product or accessories. Do not insert any objects into connection sockets. The product is not suitable for outdoor use. Do not short-circuit the connections. Only use the product if it is in perfect condition. Never operate a defective device! The appliance must not be modified in any way. Risk of electric shock and accident! Keep the appliance away from moisture and humidity. Avoid extreme loads such as extreme heat or cold, moisture, microwaves, mechanical pressure and vibrations. Avoid overloading the socket: Do not connect several high-current devices at the same time. Overloaded sockets can lead to overheating and a fire hazard. **Disconnect the mains power supply before connecting. Electrical work, installation and repairs may only be carried out by qualified electricians. Avoid inserting metal objects or fingers into the socket to prevent a short circuit or electric shock - DANGER TO LIFE!** Only wipe the appliance with a soft, dry cloth. Never use scouring powder or chemical cleaning agents. Electrical components must not come into contact with moisture. Do not kink, crush, pinch or otherwise damage the cables. If you have any questions, defects, mechanical damage or other problems, please contact the dealer or manufacturer. If you have any doubts about the safety of the socket or if it is not working properly, have it checked by a qualified electrician and repaired if necessary. The product is not a toy and does not belong in the hands of children! Please note that the product, packaging, plastic film / bags, polystyrene parts, etc. are not suitable for children. Small parts and insulating material can become a dangerous toy for children and pose a hazard.

ASSEMBLY

1. Turn off the circuit breaker and check for the absence of voltage. **2.** Install the desired switch or socket properly according to its installation manual. **3.** Insert the socket cover into the frame and hand-tighten the socket cover into the flush-mounted box using the screw in the center, or hold the frame in the desired position and insert the switch rockers into the corresponding switch.



Note: When using the frame with USB sockets, either one corner or both corners of the plastic must be carefully cut out. The plastic does not have any markings or perforations for cutting out to ensure stability for the other applications.

DISPOSAL INSTRUCTIONS: By separating, recycling and disposing of old appliances in this way, you are making an important contribution to protecting our environment. Packaging can be disposed of free of charge in accordance with local regulations at the appropriate collection centres. According to the European WEEE Directive, electrical and electronic appliances may not be disposed of with household waste. Their components must be recycled or disposed of separately, as toxic and hazardous components can cause lasting damage to health and the environment if disposed of improperly. As a consumer, you are obliged under the German Electrical and Electronic Equipment Act (ElektroG) to return electrical and electronic equipment free of charge at the end of its life to the manufacturer, the point of sale or to public collection centres set up for this purpose. Details are regulated by the respective state law. The wheeled bin symbol on the product, operating instructions and/or packaging indicates these regulations.



DE: Eine mehrsprachige Version dieser Anleitung und die Konformitätserklärung finden Sie unter folgendem Link:

EN: A multilingual version of this manual and the Declaration of Conformity can be found at the following link:

FR: Vous trouverez une version multilingue de ce manuel et la déclaration de conformité sur le lien suivant:

ES: Encontrará una versión multilingüe de estas instrucciones y de la declaración de conformidad en el siguiente enlace:

<http://ettgroup.de/product/1534764>

Frame McPower „FLAIR“

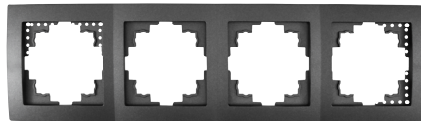
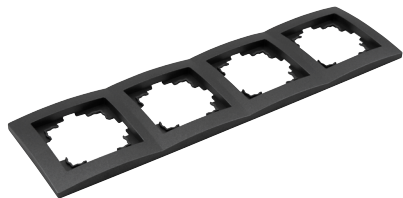
quadruple, anthracite

TECHNICAL DETAILS: - Quadruple frame - Dimensions (WxHxD): 292x80x8mm

SAFETY INSTRUCTIONS: Keep the operating instructions for the appliance in a safe place. Check the appliance regularly for damage. Do not modify the product or accessories. Do not insert any objects into connection sockets. The product is not suitable for outdoor use. Do not short-circuit the connections. Only use the product if it is in perfect condition. Never operate a defective device! The appliance must not be modified in any way. Risk of electric shock and accident! Keep the appliance away from moisture and humidity. Avoid extreme loads such as extreme heat or cold, moisture, microwaves, mechanical pressure and vibrations. Avoid overloading the socket: Do not connect several high-current devices at the same time. Overloaded sockets can lead to overheating and a fire hazard. **Disconnect the mains power supply before connecting. Electrical work, installation and repairs may only be carried out by qualified electricians. Avoid inserting metal objects or fingers into the socket to prevent a short circuit or electric shock - DANGER TO LIFE!** Only wipe the appliance with a soft, dry cloth. Never use scouring powder or chemical cleaning agents. Electrical components must not come into contact with moisture. Do not kink, crush, pinch or otherwise damage the cables. If you have any questions, defects, mechanical damage or other problems, please contact the dealer or manufacturer. If you have any doubts about the safety of the socket or if it is not working properly, have it checked by a qualified electrician and repaired if necessary. The product is not a toy and does not belong in the hands of children! Please note that the product, packaging, plastic film / bags, polystyrene parts, etc. are not suitable for children. Small parts and insulating material can become a dangerous toy for children and pose a hazard.

ASSEMBLY

1. Turn off the circuit breaker and check for the absence of voltage. **2.** Install the desired switch or socket properly according to its installation manual. **3.** Insert the socket cover into the frame and hand-tighten the socket cover into the flush-mounted box using the screw in the center, or hold the frame in the desired position and insert the switch rockers into the corresponding switch.



Note: When using the frame with USB sockets, either one corner or both corners of the plastic must be carefully cut out. The plastic does not have any markings or perforations for cutting out to ensure stability for the other applications.

DISPOSAL INSTRUCTIONS: By separating, recycling and disposing of old appliances in this way, you are making an important contribution to protecting our environment. Packaging can be disposed of free of charge in accordance with local regulations at the appropriate collection centres. According to the European WEEE Directive, electrical and electronic appliances may not be disposed of with household waste. Their components must be recycled or disposed of separately, as toxic and hazardous components can cause lasting damage to health and the environment if disposed of improperly. As a consumer, you are obliged under the German Electrical and Electronic Equipment Act (ElektroG) to return electrical and electronic equipment free of charge at the end of its life to the manufacturer, the point of sale or to public collection centres set up for this purpose. Details are regulated by the respective state law. The wheeled bin symbol on the product, operating instructions and/or packaging indicates these regulations.



DE: Eine mehrsprachige Version dieser Anleitung und die Konformitätserklärung finden Sie unter folgendem Link:

EN: A multilingual version of this manual and the Declaration of Conformity can be found at the following link:

FR: Vous trouverez une version multilingue de ce manuel et la déclaration de conformité sur le lien suivant:

ES: Encontrará una versión multilingüe de estas instrucciones y de la declaración de conformidad en el siguiente enlace:

<http://ettgroup.de/product/1534765>