

# Network socket McPower „SHALLOW“

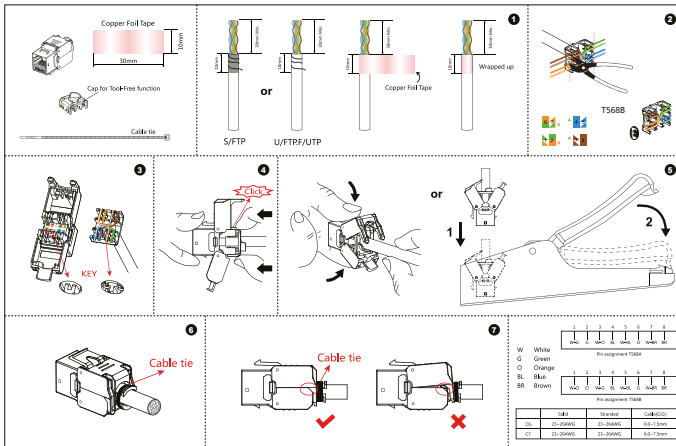
CAT6A, flush-mounted, anthracite, fully shielded

**TECHNICAL DETAILS:** · 2x RJ45 socket · compatible with all RJ45 cables · CAT 6A · fully shielded · tool-free cable installation thanks to Snap-In technology · flush-mounted installation · compatible with all McPower Flair frames · 10 Gigabit Ethernet network (10/100/1000/10000 Mbit/s) · transmission bandwidths up to 500 MHz · compatible with CAT5, CAT5e, CAT6, CAT6a · dimensions with frame 80x80mm · installation depth approx. 29mm · can also be used as a surface-mounted box with Flair surface-mounted frame

**SAFETY INSTRUCTIONS:** Keep the device's operating manual. Regularly inspect the device for damage. Do not modify the product or accessories. Do not insert objects into connection sockets. The product is not suitable for outdoor use. Do not short-circuit the connections. Only use the product if it is in perfect condition. Never operate a defective device! The device must not be altered in any way. Risk of electric shock and accidents! Keep the device away from moisture and humidity. Avoid extreme conditions such as excessive heat or cold, moisture, microwaves, mechanical pressure, and vibrations. Avoid overloading the device. Overloaded devices can lead to overheating and pose a fire hazard. Disconnect the power supply before connecting. Electrical work, installation, and repairs should only be carried out by qualified electricians. Avoid inserting metallic objects or fingers into the socket to prevent short circuits or electric shocks – DANGER TO LIFE! Wipe the device only with a soft, dry cloth. Do not use scouring powders or chemical cleaning agents. Electrical components must not come into contact with moisture. Do not bend, crush, pinch, or otherwise damage the cables. For questions, defects, mechanical damage, and other issues, please contact the retailer or manufacturer. If you have doubts about the safety of the network socket or if it does not function properly, have it inspected and repaired by a qualified electrician if necessary. The product is not a toy and should be kept out of children's hands! Please note that the product, as well as packaging, plastic films/bags, Styrofoam parts, etc., small parts, and insulation materials can become dangerous toys for children and pose a hazard.

## ASSEMBLY

1. Turn off the circuit breaker and check for absence of voltage. 2. Strip approximately 5-6 cm of the network cable and untwist the wire pairs. 3. Place wires in the terminal slots according to the color code. 4. Tightly press wires into place with an LSA tool. 5. Mount the socket in the wall box, then attach the frame and cover. 6. Test the connection.



**DISPOSAL INSTRUCTIONS:** By separating, recycling and disposing of old appliances in this way, you are making an important contribution to protecting our environment. Packaging can be disposed of free of charge in accordance with local regulations at the appropriate collection centres. According to the European WEEE Directive, electrical and electronic appliances may not be disposed of with household waste. Their components must be recycled or disposed of separately, as toxic and hazardous components can cause lasting damage to health and the environment if disposed of improperly. As a consumer, you are obliged under the German Electrical and Electronic Equipment Act (ElektroG) to return electrical and electronic equipment free of charge at the end of its life to the manufacturer, the point of sale or to public collection centres set up for this purpose. Details are regulated by the respective state law. The wheeled bin symbol on the product, operating instructions and/or packaging indicates these regulations.



**DE:** Eine mehrsprachige Version dieser Anleitung und die Konformitätserklärung finden Sie unter folgendem Link:

**EN:** A multilingual version of this manual and the Declaration of Conformity can be found at the following link:

**FR:** Vous trouverez une version multilingue de ce manuel et la déclaration de conformité sur le lien suivant:

**ES:** Encontrará una versión multilingüe de estas instrucciones y de la declaración de conformidad en el siguiente enlace:

<http://ettgroup.de/product/1535639>